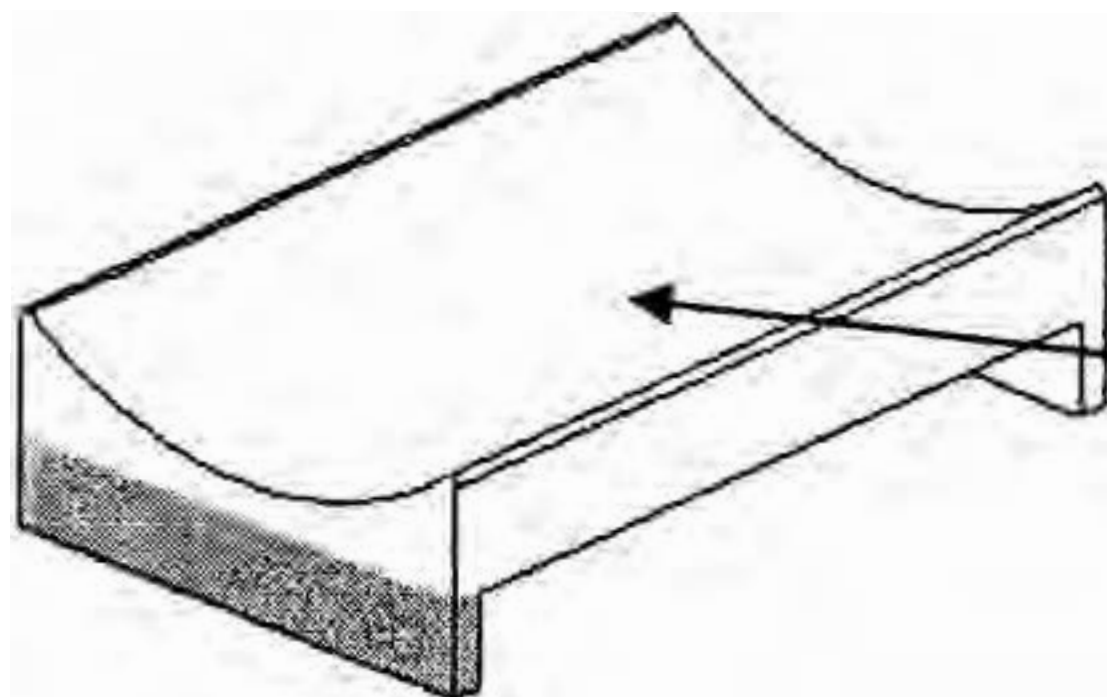


INSTALLATION INSTRUCTION TO KIT W80003085

Upper Tip-insert Retro-Fit Procedure STABIL-RIDE™ Front Suspension

Step 1: Remove one wing/ear off tip-insert supplied with kit (shaded area)



Add shims as necessary
To this surface

Step 2: Jack front of vehicle off the ground and support with jack stands.

Installers Tip: It may make the install easier if the front tires are removed.

Step 3: Place a jack under the front axle to support the suspension.

Step 4: Loosen and remove the right and left front eye bolts.

Step 5: Slowly lower the jack so the front of the springs are free from the hanger.

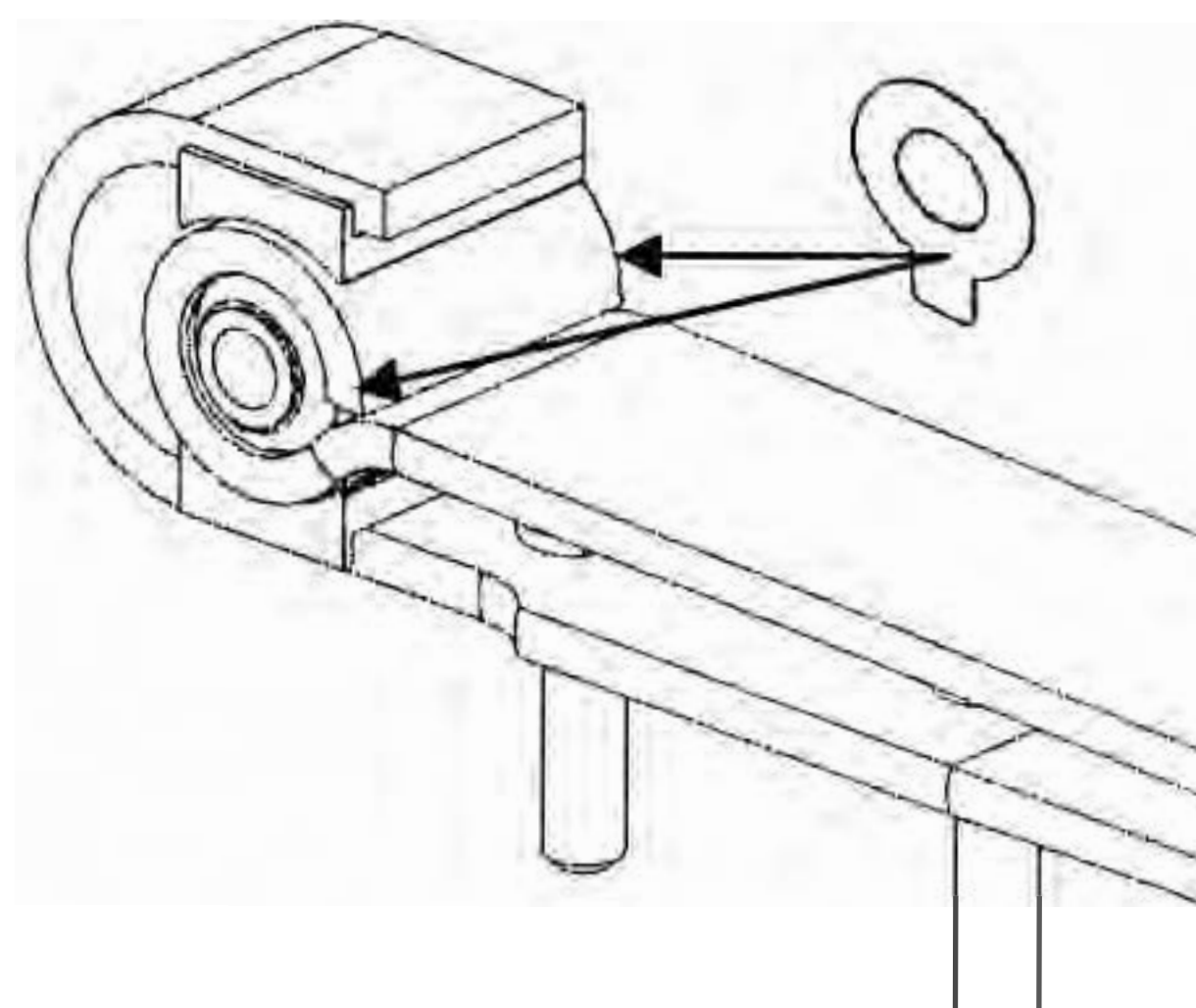
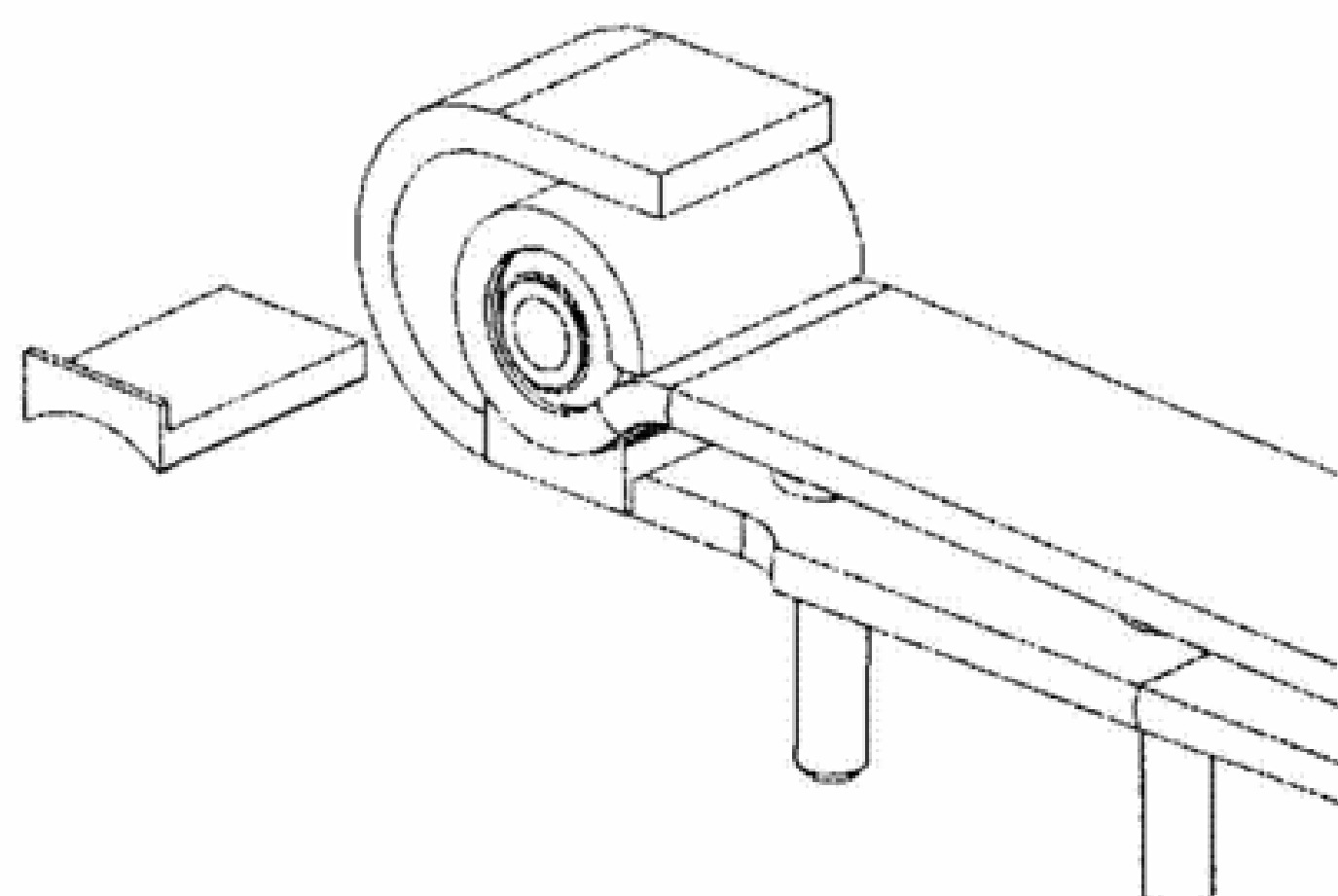
Installers Tip: It may be necessary to chalk the wheels of the jack before lowering the springs to prevent the springs and shackles from rotating rearward.

Step 6: Remove and set aside plastic washers, these will be reused.

Step 7: Install the tip-inserts **you** modified earlier in the upper side of the front spring, between the wrapper leaf and the eye. As shown.

Installers Tip: It may be necessary to use a pry bar open the gap between the wrapper leaf and the eye to necessitate installation.

Step 7A: The tip-insert should not be loose, after insertion. If the tip-insert is loose, cut a shim approximately 3" long, from material provided. Peel the waxy backing, to expose the adhesive, and place the plastic shim adhesive side down on the curved surface of the tip-insert. Keep adding shims until tip insert fits snugly between the eye and wrapper leaf.



Step 8: place the plastic washer on the spring eye. Be sure the washer does not cover any part of the metal inner tube of the bushing. Repeat this step for both sides of both springs (qty. 4 washers).

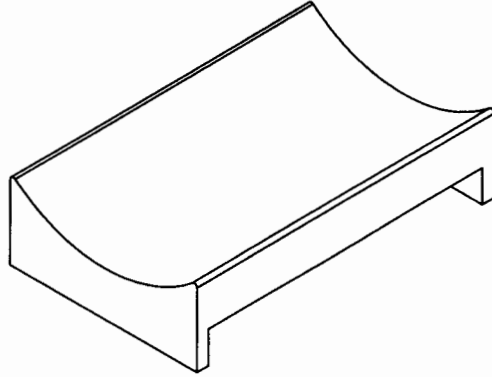
Step 9: Slowly raise the axle until the spring eye and hanger bolt hole align,

Step 10: Reinsert the right front and left front eye bolts.

Step 11: Torque the spring eye bolts to 203ft-lbs.

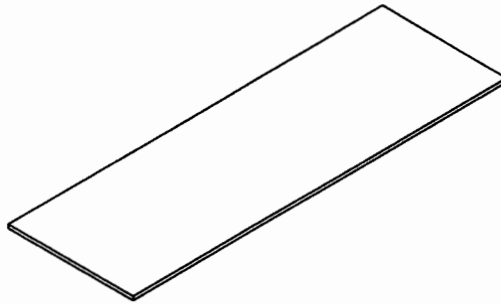
KIT2943

UPPER TIP-INSERT RETRO-FIT KIT



W0005011

<u>DSP#</u>	<u>QTY.</u>	<u>ITEM</u>
S-2148	2	UHMW TIP-INSERT



W8003083

<u>DSP#</u>	<u>QTY.</u>	<u>ITEM</u>
S-2069-2	2	.030 ADHESIVE BACKED SHIM